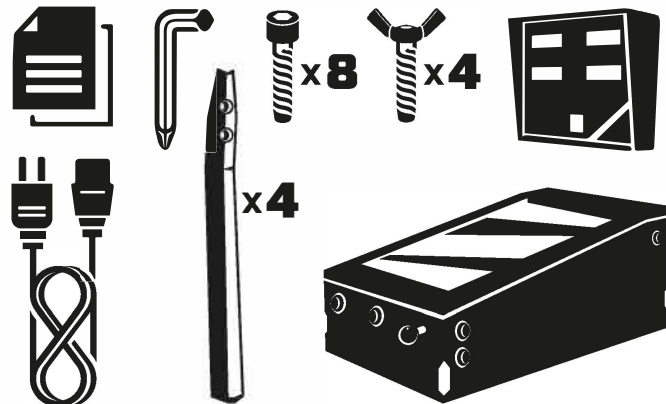


**21C**  
**DIGITAL**  
© TOY SHOCK INTERNATIONAL LIMITED

**3D**  
HOME USE  
**PINBALL MACHINE**  
3D DIGITAL EFFECTS EMULATE ACTUAL PINBALL GAMES

## • INSTRUCTION MANUAL •

### INCLUDED IN BOX



**IMPORTANT!** To ensure safe operation of the product, be sure to read this Instruction Manual carefully before use. Keep this Instruction Manual for easy reference when needed.



This device complies with Part 15 of the FCC Rules. Operation is subject to the following two conditions:  
(1) this device may not cause harmful interference, and (2) this device must accept any interference received, including interference that may cause undesired operation.

ITEM NO. 77000A  
MADE IN CHINA

**14+**

**Gottlieb.**

©2019 FARSIGHT STUDIOS, INC. ALL RIGHTS RESERVED.  
ALL TRADEMARKS AND THEIR COPYRIGHTS ARE THE PROPERTY OF THEIR RESPECTIVE HOLDERS.  
CREATED AND DISTRIBUTED UNDER LICENSE FROM GOTTIEB DEVELOPMENT, LLC. ALL RIGHTS RESERVED.

**TOY SHOCK**

© Toy Shock International Limited

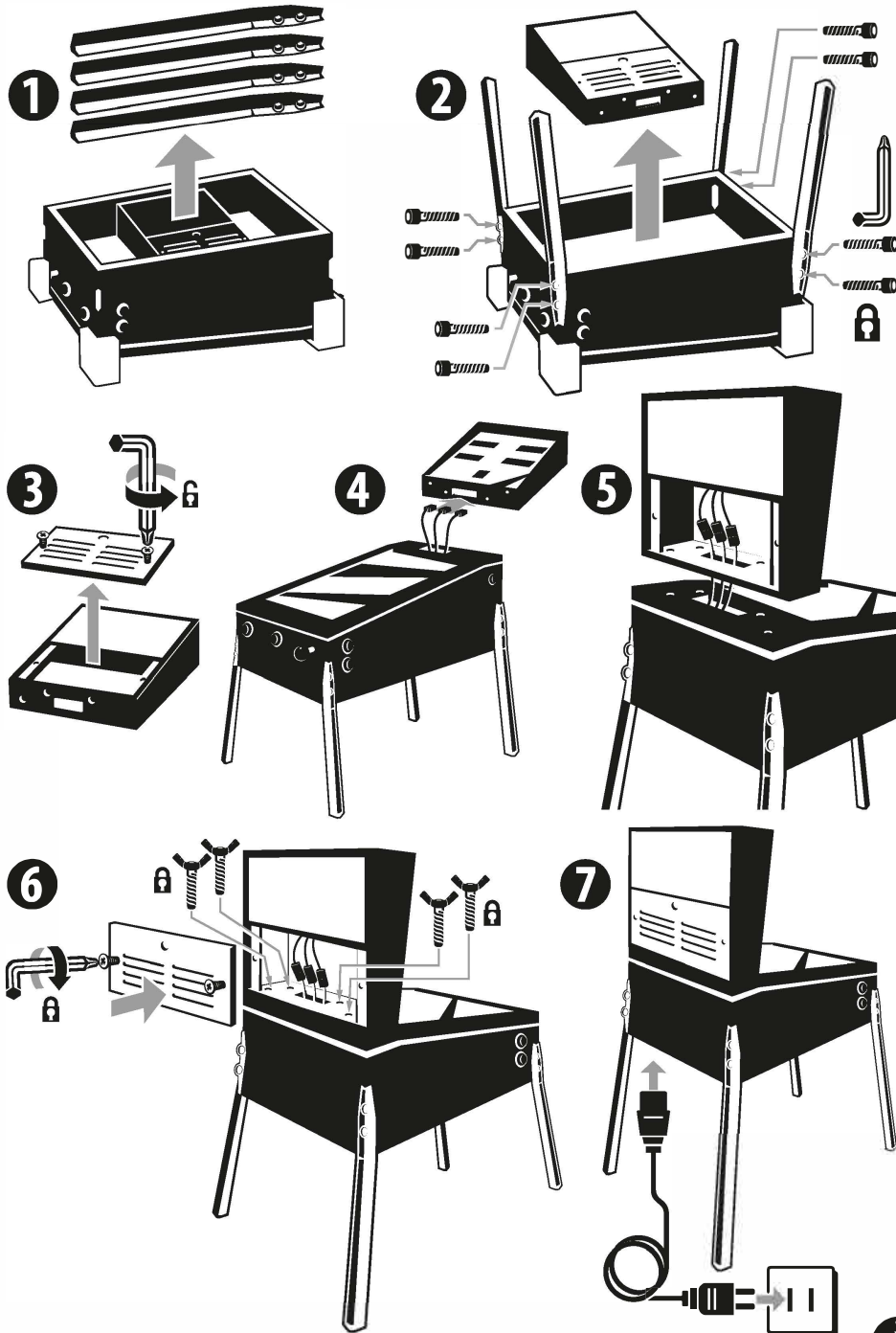
Manufactured by / Fabricado por:  
**Toy Shock International Limited**  
Unit 302-303, 3/F, Tower B, New Mandarin Plaza,  
14 Science Museum Road,  
Tsim Sha Tsui East Kowloon, Hong Kong

**Toyshock Iberia, S.L.U.**  
C/ Guzman el Bueno 133,  
Edif Britannia 5B  
Madrid 28003, España

**Toyshock LLC**  
123 Madeira Ave,  
Suite 203, Coral Gables,  
Miami FL 33134, U.S.A.

[www.toyshock.com](http://www.toyshock.com) | [info@toyshock.com](mailto:info@toyshock.com)

## QUICK ASSEMBLY



## BUTTON CONTROLS

**Red** BUTTON

In-Game - Activate Left Flipper

Main Menu - Scroll Left

Table Menu - Scroll Up

**Blue** BUTTON

In-Game - Nudge Left

**Blue** BUTTON

In-Game - Nudge Front

Main Menu - Option

Table Menu - Back

**Yellow** BUTTON

In-Game - Pause

Main Menu - Select

Table Menu - Start

**ON/OFF** switch

**Red** BUTTON

In-Game - Activate Right Flipper

Main Menu - Scroll Right

Table Menu - Scroll Down

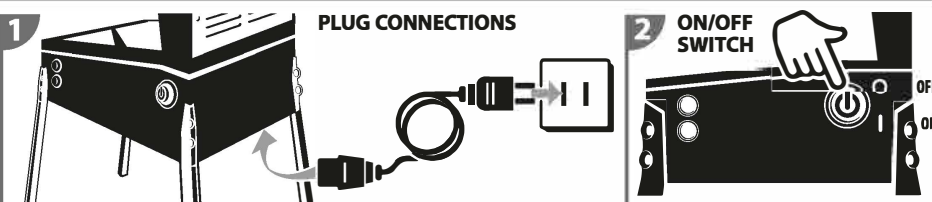
**Blue** BUTTON

In-Game - Nudge Right

**Plunger**

Pinball machine may take 20-30 seconds to power on after switching ON

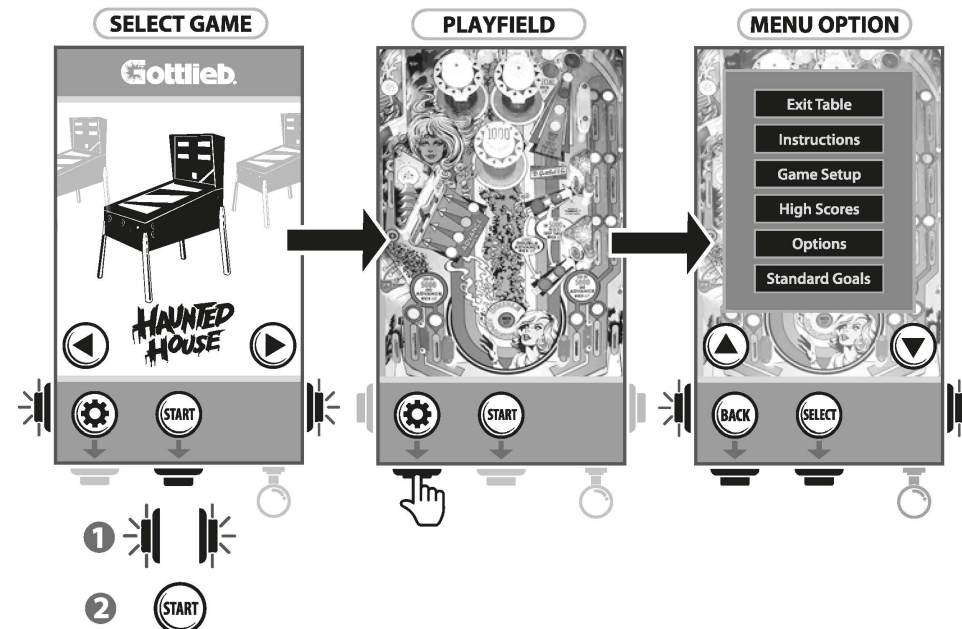
## TURNING SYSTEM ON AND OPENING SCREEN



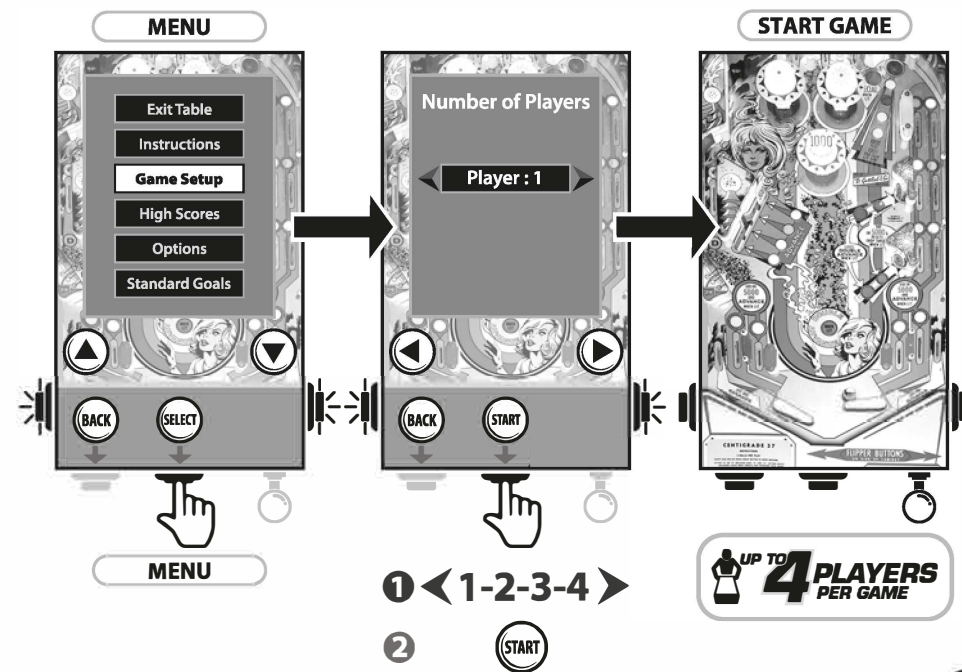
### VOLUME ADJUSTMENT



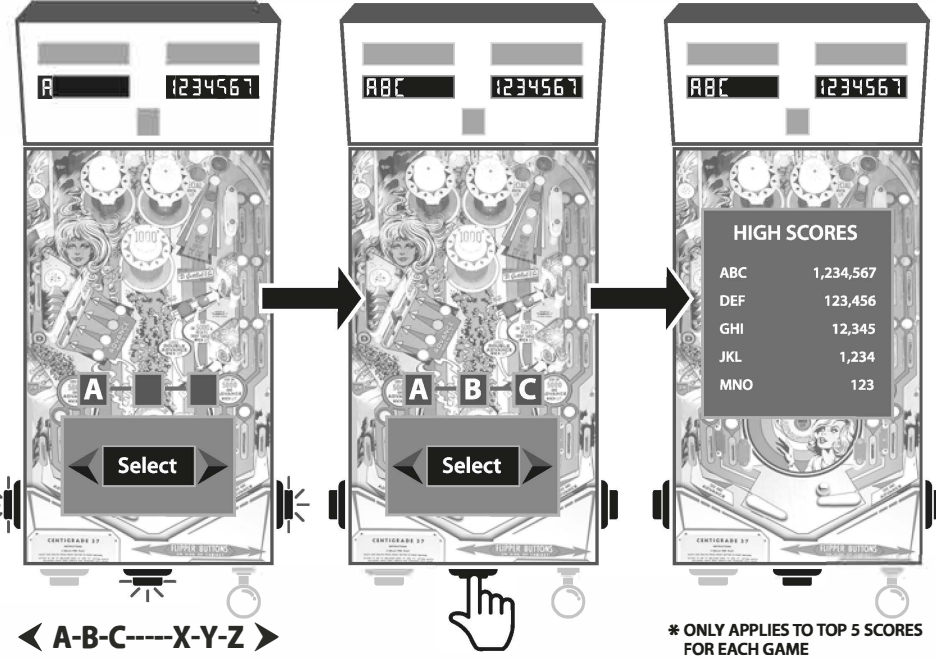
## GAME SELECTION AND MENU



## MULTI-PLAYERS SELECTION



HIGH SCORES\*



TROUBLESHOOTING

PROBLEM	SOLUTION
Game will not turn on	<ul style="list-style-type: none"> <li>Check to make sure ON/OFF switch is in the ON position.</li> <li>Check to make sure Power Cord is fully connected to machine. Make sure cord plug is properly connected to the adapter receptacle located under the machine cabinet. This should be inserted all the way up into the receptacle and firmly affixed within the adapter housing.</li> <li>Check to make sure Power Cord is plugged into the wall power outlet.</li> <li>Check to make sure the Wall outlet has power and is working correctly.</li> </ul>
Game Play Field is Frozen	<ul style="list-style-type: none"> <li>Turn the machine OFF, wait 10 seconds and then back ON. The games should reset.</li> <li>If games do not reset, then turn machine OFF, disconnect power cord from wall outlet and wait one minute. Reconnect power cord to wall outlet and turn machine back ON.</li> </ul>
Screen Display is not in normal layout	<ul style="list-style-type: none"> <li>Turn the machine OFF, wait 10 seconds and then back ON. The games should reset and display should return to normal positioning.</li> </ul>
Sound is too soft or too loud	<ul style="list-style-type: none"> <li>This machine has an adjustable volume control. Go to Menu, select Options, then Volume. You lower the volume by pressing the Red Button on the Left side of the machine and increase the volume by pressing the Red Button on the Right side of the machine. Once you have adjusted the volume to the desired level you can EXIT the volume control screen by pressing the Blue Button on the front panel of the machine and continue with your game.</li> </ul>

INSTALLATION

This Pinball Machine is designed for personal use only. It is designed for indoor use and should not be operated outdoors. Please adhere to the following operating conditions:

1. Avoid extreme heat or cold, contact with water, high humidity or direct sunlight.
2. The Pinball Machine should be set on a level surface.
3. Do not install Pinball Machine where it would be an obstruction in the case of fire or other emergencies. Avoid placement near emergency exits or emergency equipment such as fire extinguishers.

WARNING

- READ SAFETY INSTRUCTIONS BEFORE USING PINBALL MACHINE**
- ◆ Read and understand all instructions and warnings included in the Instruction Manual.
  - ◆ Avoid having the Pinball Machine come in contact with water.
  - ◆ Avoid having the Pinball Machine come in contact with any open flame or extreme heat.
  - ◆ Keep the ventilation openings clear of any obstruction and avoid placing Pinball Machine directly against a wall or flat surface.
  - ◆ This Pinball Machine has a protective ground terminal and should only be connected to a primary outlet having a protective ground connection.
  - ◆ The AC adapter can be used as a disconnect devise.
  - ◆ Always disconnect the A/C power cord from the electrical outlet before handling or moving Pinball Machine.
  - ◆ Strictly avoid having any water come in contact with the electrical adapter.
  - ◆ Parents or guardians should read and understand the Instruction Manual completely before allowing minors to play with this machine.

SAFETY INSTRUCTIONS

- ◆ Read and understand all part of the Instruction Manual before playing.
- ◆ Retain a copy of the Instruction Manual for future reference.
- ◆ Understand and follow all Warnings and Safety Instructions included in the Instruction Manual.
- ◆ Do not allow water to come into contact with the Pinball Machine.
- ◆ Clean Pinball Machine with a Clean Dry Cloth.
- ◆ Keep away from heat, any device that creates heat and any open flame.
- ◆ Avoid damage to the power cord of any type especially around receptacles.
- ◆ Do not crease, crimp, squeeze or cut the power cord.
- ◆ Disconnect the power cord from the primary outlet when not in use for an extended period of time or during electrical storms.
- ◆ If the plug provided with the machine does not fit into your outlet, consult an electrician for replacement of existing outlet if necessary.
- ◆ Do not damage or alter the protective electrical plug as these are included for your safety and that of the Pinball Machine.

**CAUTION!**  
Failure to adhere to the warnings and safety instructions or abuse and misuse of the pinball machine may, at the discrection of the manufacturer, void any applied warranty.

FEDERAL COMMUNICATIONS COMMISSION COMPLIANCE

This device complies with Part 15 of the FCC Rules. Operation is subject to the following two conditions:  
(1) this device may not cause harmful interference, and  
(2) this device must accept any interference received, including interference that may cause undesired operation.  
Warning: Changes or modifications to this unit not expressly approved by the party responsible for compliance could void the user's authority to operate the equipment. NOTE: This equipment has been tested and found to comply with the limits for a Class B digital device, pursuant to Part 15 of the FCC Rules. These limits are designed to provide reasonable protection against harmful interference in a residential installation. This equipment generates, uses and can radiate radio frequency energy and, if not installed and used in accordance with the instructions, may cause harmful interference to radio communications. However, there is no guarantee that interference will not occur in a particular installation. If this equipment does cause harmful interference to radio or television reception, which can be determined by turning the equipment off and on, the user is encouraged to try to correct the interference by one or more of the following measures:  
- Reorient or relocate the receiving antenna.  
- Increase the separation between the equipment and receiver.  
- Connect the equipment into an outlet on a circuit different from that to which the receiver is connected.  
- Consult the dealer or an experienced radio/TV technician for help.

The following symbols are used in labels on the game to draw attention to potentially hazardous situations

**Electrical Shock Hazard.**  
Disconnect power before removing cover. Should only be done by a qualified technician.

**WARNING:**  
To reduce the risk of fire or electric shock, do not expose this apparatus to rain or moisture.

**WARNING!**  
Changes or modifications to this unit not expressly approved by the party responsible for compliance could void the user's authority to operate the equipment.

**CAUTION!**  
Servicing instructions are for use by qualified service personnel only. To reduce the risk of electric shock, do not perform any servicing other than that contained in the operating instructions unless you are qualified to do so.

**EPILEPSY WARNING**  
A very small percentage of individuals may experience epileptic seizures or blackouts when to certain light patterns or flashing lights. Exposure to certain patterns or backgrounds on a television screen or when playing video games may trigger epileptic seizures or blackouts in these individuals. To reduce the risk of such a seizure incident, it is recommended to take a 10-15 minute break at each hour of playing.

PRODUCTS SPECIFICATION

LCD DISPLAY	23.8 inch (Diagonal) HD 1920 x 1080 Resolution
SYSTEM O/S	Pinball 1.0
INPUT POWER	AC 100V-240V ~ 50/60Hz 2A
OUTPUT POWER	DC 12V = 5A
ASSEMBLED DIMENSIONS	23.5"(L) x 35.5"(W) x 50.5"(H) 595(L)mm x 900(W)mm x 1285(H)mm



TROUBLESHOOTING

PROBLEM	SOLUTION
Game will not turn on	<ul style="list-style-type: none"> <li>Check to make sure ON/OFF switch is in the ON position.</li> <li>Check to make sure Power Cord is fully connected to machine. Make sure cord plug is properly connected to the adapter receptacle located under the machine cabinet. This should be inserted all the way up into the receptacle and firmly affixed within the adapter housing.</li> <li>Check to make sure Power Cord is plugged into the wall power outlet.</li> <li>Check to make sure the Wall outlet has power and is working correctly.</li> </ul>
Game Play Field is Frozen	<ul style="list-style-type: none"> <li>Turn the machine OFF, wait 10 seconds and then back ON. The games should reset.</li> <li>If games do not reset, then turn machine OFF, disconnect power cord from wall outlet and wait one minute. Reconnect power cord to wall outlet and turn machine back ON.</li> </ul>
Screen Display is not in normal layout	<ul style="list-style-type: none"> <li>Turn the machine OFF, wait 10 seconds and then back ON. The games should reset and display should return to normal positioning.</li> </ul>
Sound is too soft or too loud	<ul style="list-style-type: none"> <li>This machine has an adjustable volume control. Go to Menu, select Options, then Volume. You lower the volume by pressing the Red Button on the Left side of the machine and increase the volume by pressing the Red Button on the Right side of the machine. Once you have adjusted the volume to the desired level you can EXIT the volume control screen by pressing the Blue Button on the front panel of the machine and continue with your game.</li> </ul>

